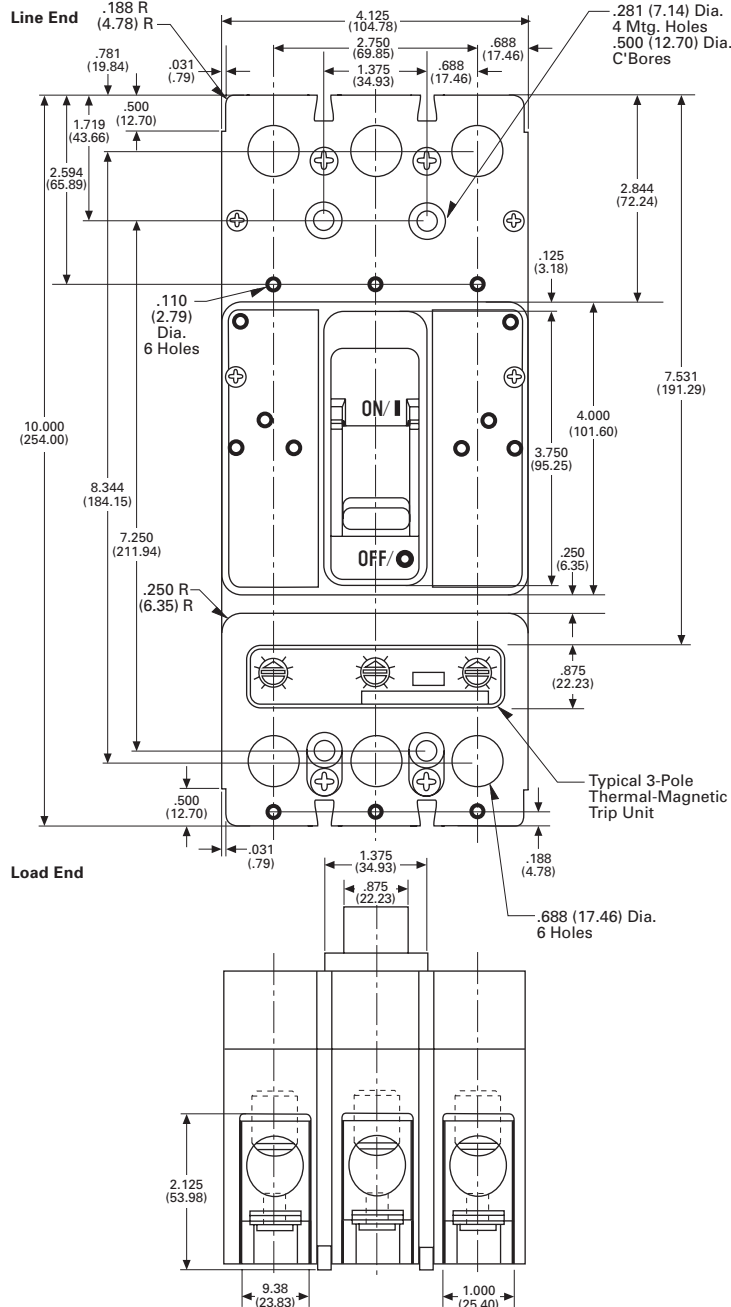
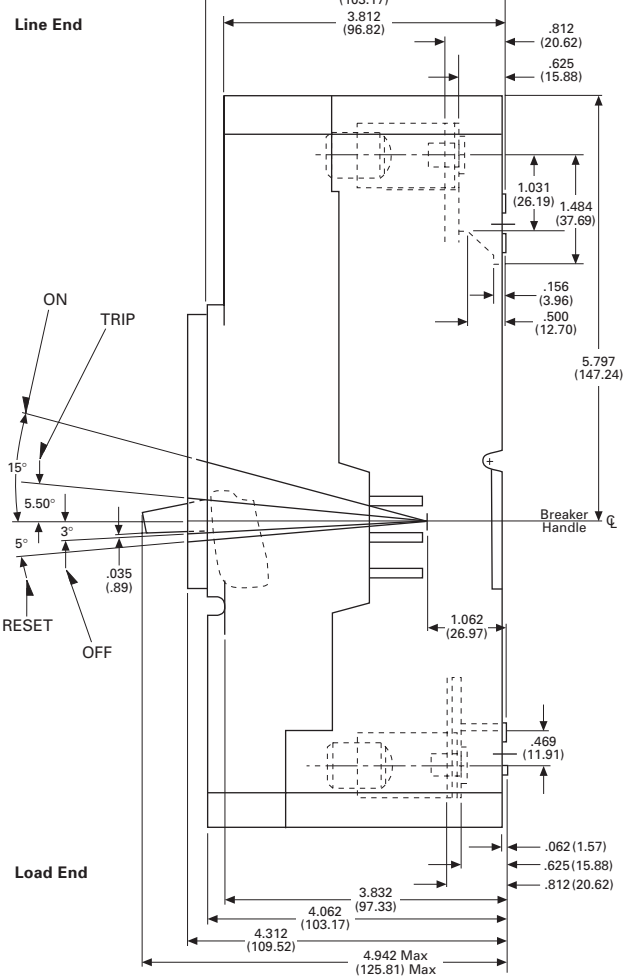


October 1997
 Mailed to: E, D, C/29-100A

Series C[®] HMCP Motor Circuit Protectors 3-600 Amperes

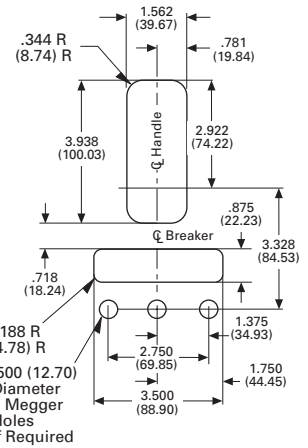
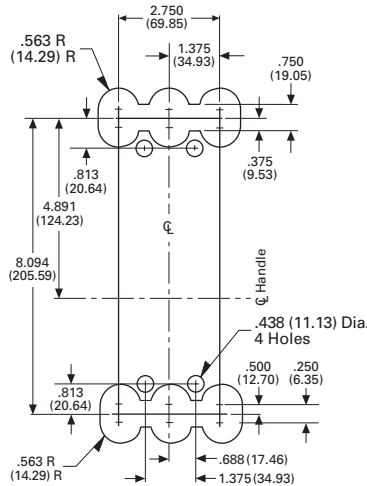
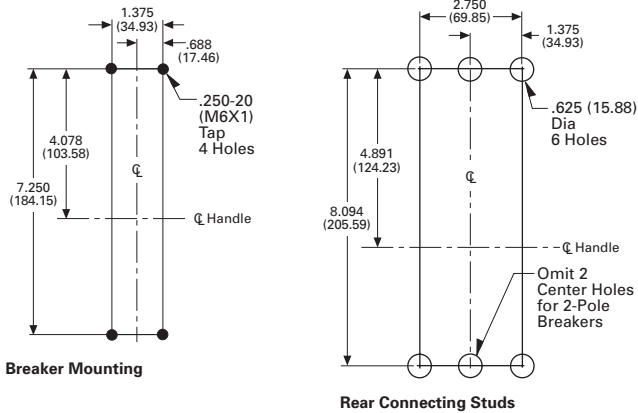
J-Frame
Front View

Side View




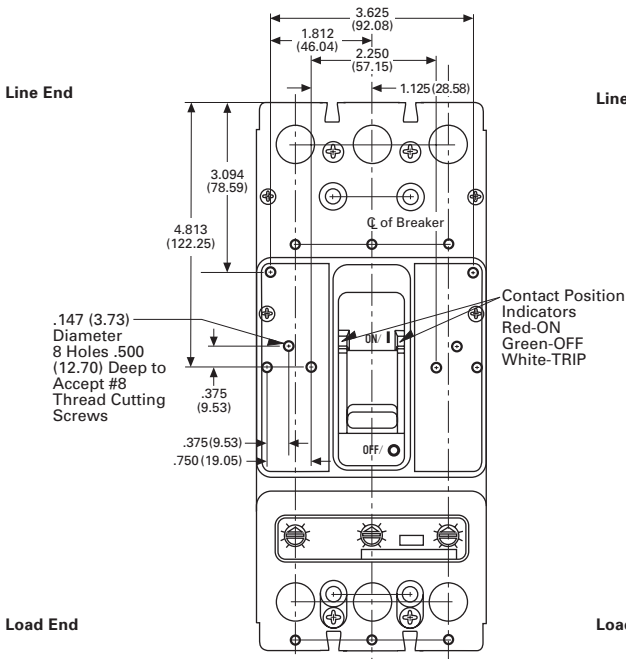
Series C HMCP Motor Circuit Protectors, 3-600 Amperes

J-Frame

Drilling Plans

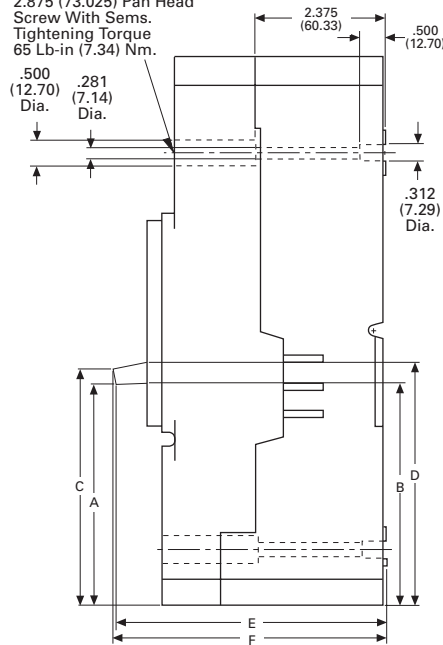


Breaker Shown in OFF Position



Drawout Support Blocks

Breaker Mounting Holes Use .250-20 (M6X1) X 2.875 (73.025) Pan Head Screw With Sems. Tightening Torque 65 Lb-in (7.34) Nm.



Front Cover Cutout

Reproduced from drawings 1491D65 and 1491D67

Breaker Status	Dimension						Hdl. Oper. Force
	A	B	C	D	E	F	
On	5.24 (132.10)	5.12 (130.05)	5.54 (140.72)	5.49 (139.45)	4.77 (121.56)	4.72 (119.89)	32 Lb. (142.3 Nm)
Tripped	4.79 (121.67)	4.71 (119.63)	5.10 (129.54)	5.10 (129.54)	4.87 (123.70)	4.85 (123.19)	
Off	4.02 (102.11)	4.06 (103.12)	4.33 (109.82)	4.45 (113.03)	4.91 (124.71)	4.95 (125.73)	22 Lb. (97.9 Nm)
Reset	3.91 (99.31)	3.96 (100.58)	4.21 (106.93)	4.36 (110.74)	4.90 (124.46)	4.95 (125.73)	38 Lb. (169.0 Nm)

Dimensions in parentheses in millimeters

Cutler-Hammer

Westinghouse & Cutler-Hammer Products
Five Parkway Center
Pittsburgh, Pennsylvania, U.S.A. 15220

